

Messenger Pro

Multi-Platform Messaging Client

Installation Guide

Version 2.66

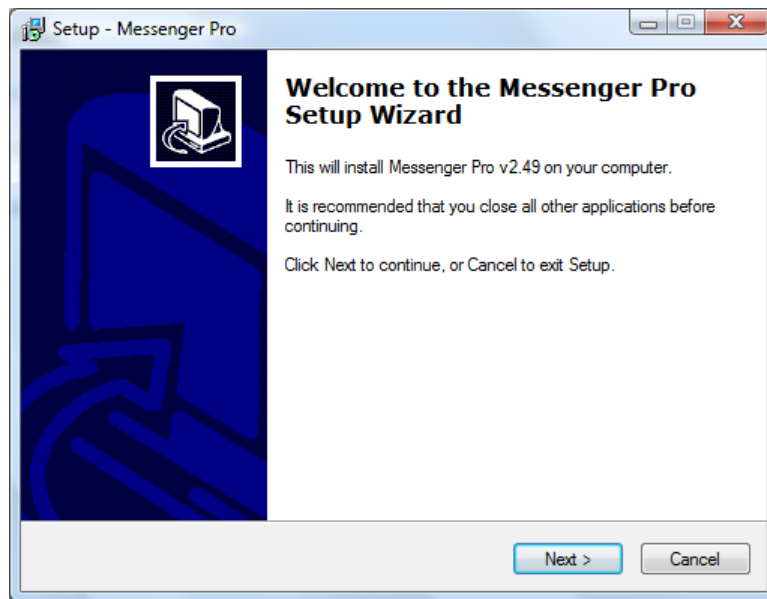
Copyright © 2003-10, Intellegit Ltd

Installation

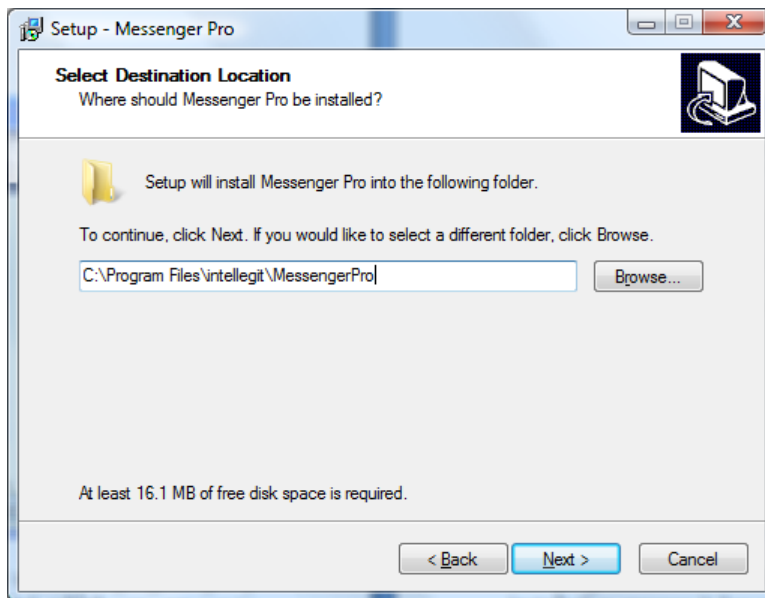
Windows Version

The Windows version is distributed as a self-extracting executable with a name similar to **messengerpro-2.50-windows.exe**; installation is started by double-clicking this file.

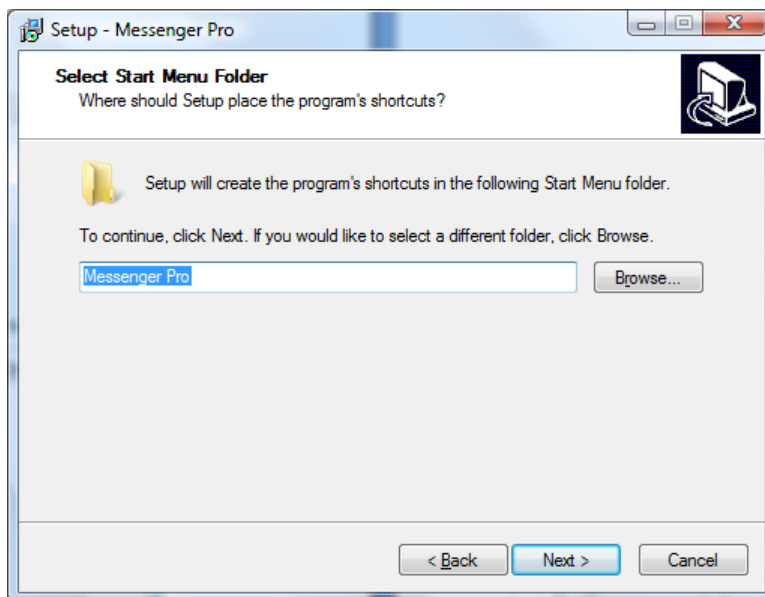
The installer is a standard Windows style installer that will ask you where you want to install *Messenger Pro* and then extract its files and copy them to the right place on your machine. It is recommended that you close all other applications before installing *Messenger Pro*, in case any of them interferes with the installation process. You can then click **Next** to continue. Note that at any stage of the installation process you may click **Cancel** to abort the installation, or **Back** to revisit earlier pages of the installer to correct any mistakes you may have made.



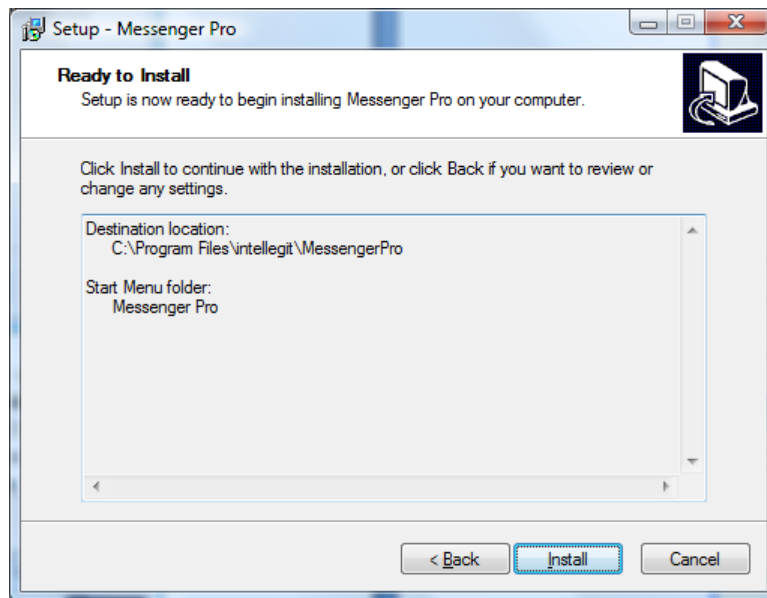
The first thing the installer asks you is where it should store *Messenger Pro* and its files. Normally the default selection of **C:\Program Files\intellegit\MessengerPro** will be suitable, but you can specify an alternative if you prefer applications to be installed elsewhere, by typing a different directory name and selecting the directory in which it should be created underneath. After specifying a suitable location, click **Next** to continue.



You're then asked where *Messenger Pro* should appear on your Start Menu. By default, a program group called **Messenger Pro** is created which contains three entries: one called **Messenger Pro**, which you can use to start *Messenger Pro* from the Start Menu, and two entries that allow you to open *Messenger Pro*'s installation (this document) and user manuals. However, you can change the name of the program group if you require, or place *Messenger Pro*'s shortcuts in the same group used by other software, e.g. perhaps one for all Internet related software. Select the program group you want to use or create and then click **Next** to continue.

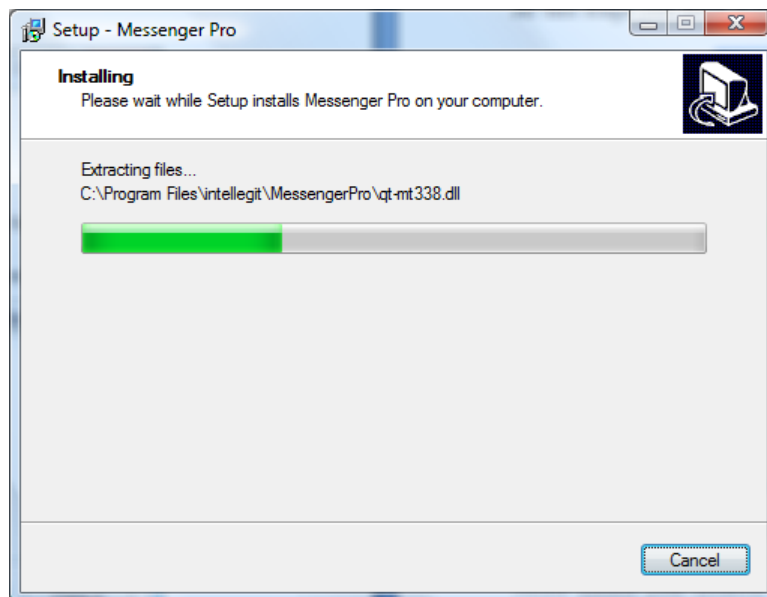


Once you have specified the destination directory and Start Menu folder, the installer is ready to install *Messenger Pro* using the preferences you have entered. These preferences are shown to you, after which clicking **Install** will proceed with the actual installation.

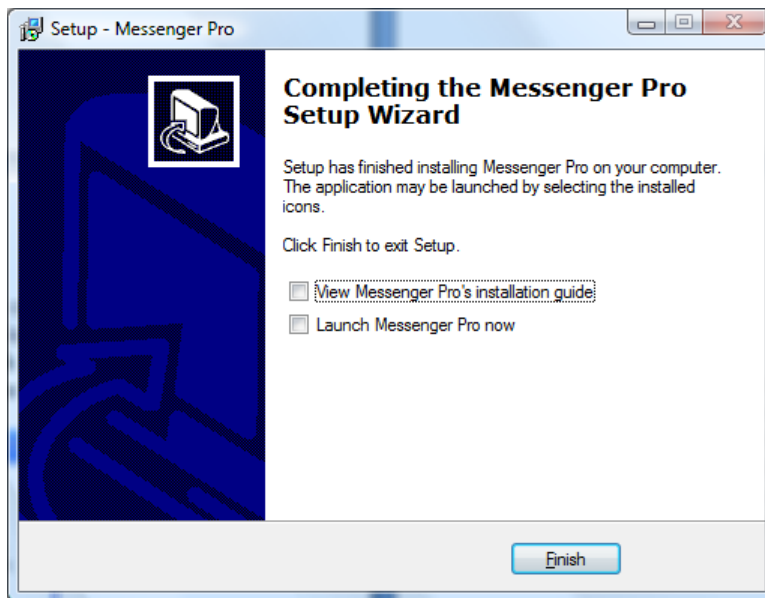


The progress of the installation is shown in the form of a bar which indicates how far through the installation process it has reached. Above the bar is the current file that the installer is working on. At this stage you must wait for the installer to finish, or you may click **Cancel** to abort.

Toward the end of this process, the Microsoft Visual C++ 2005 Redistributable will be installed, which *Messenger Pro* needs in order to operate. This appears in its own window with its own progress bar and Cancel button and will install without any user intervention required.



Assuming successful installation, you will then be notified that setup is complete after which you need only click **Finish** to exit. *Messenger Pro* can then be started by selecting its shortcut from the Start Menu folder you created during installation or by checking the **Launch Messenger Pro now** checkbox. This manual can also be opened from the installer by checking the **View Messenger Pro's user manual** checkbox.



Mac OS X Version

The Mac OS X version is distributed in the same way as most other Mac OS X applications, in a disk image file which should be dragged to an appropriate place on your system using the Finder.

A typical file name is **messengerpro-2.50-macosx.dmg** which you should double-click to view its contents; a window will open containing the *Messenger Pro* application. Simply drag the application from this window and drop onto a Finder window displaying the folder where you'd like to install *Messenger Pro*; the **Applications** folder is recommended. You may then launch *Messenger Pro* by double-clicking its icon from the Applications folder.

Linux Version

The Linux version is distributed in package format for a number of popular distributions. You must select the correct file for the particular distribution you are using.

To install a deb package as user root (e.g. for Debian/Ubuntu):

1. `su - root`
2. `dpkg -i filename`
(e.g. `dpkg -i intellegit-messengerpro_2.50-etch_i386.deb` for Debian 4.0)

To install a deb as user root using sudo:

1. `sudo dpkg -i filename`
(e.g. `sudo dpkg -i intellegit-messengerpro_2.50-etch_i386.deb` for Debian 4.0)

To install an RPM package as user root (e.g. for Fedora/SuSE/Mandrake):

1. `su - root`
2. `rpm -Uvh filename`
(e.g. `rpm -Uvh intellegit-messengerpro -2.50-fc9.i386.rpm` for Fedora 9)

To install an RPM as user root using sudo:

1. `sudo rpm -Uvh filename`
(e.g. `sudo rpm -Uvh intellegit-messengerpro -2.50-fc9.i386.rpm` for Fedora 9)

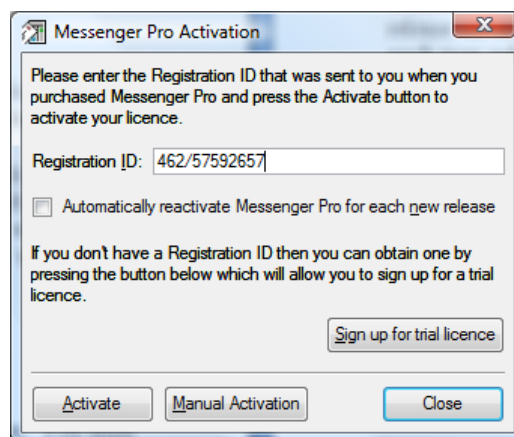
Messenger Pro may then be started by typing:

messengerpro

from the command line, or by selecting the **Messenger Pro** option from your KDE or Gnome menu.

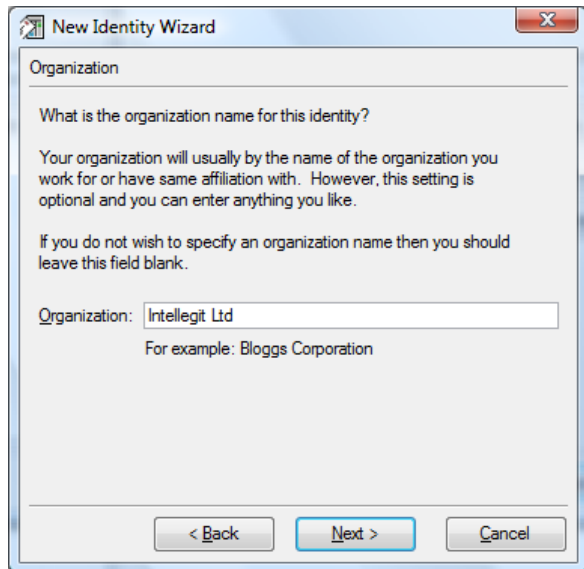
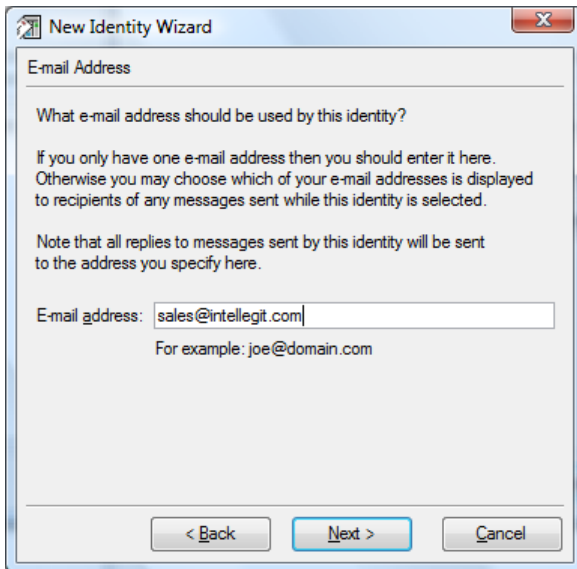
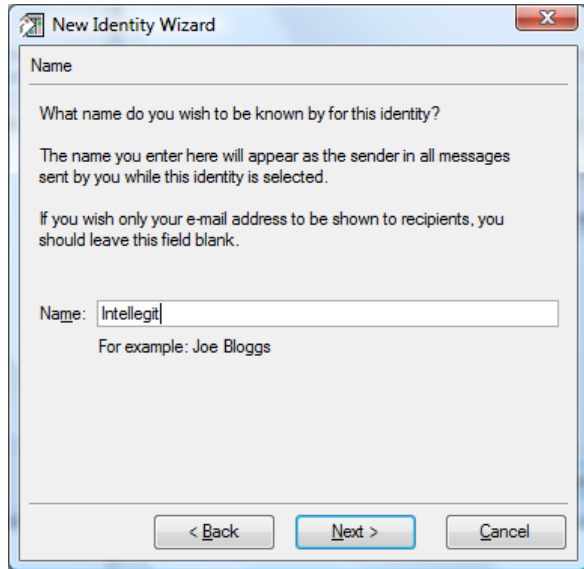
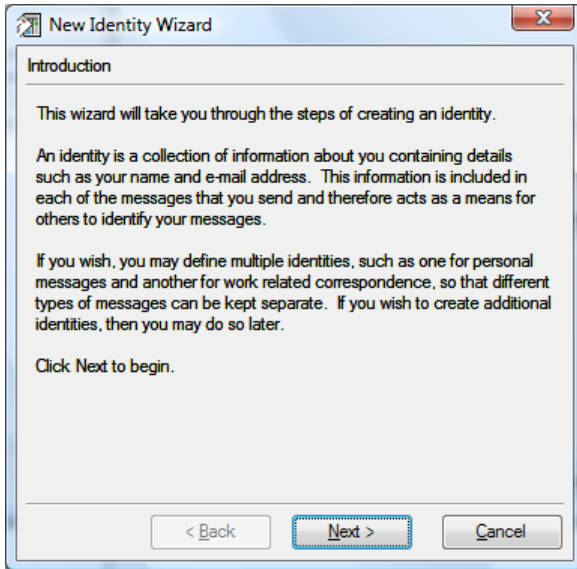
Licensing

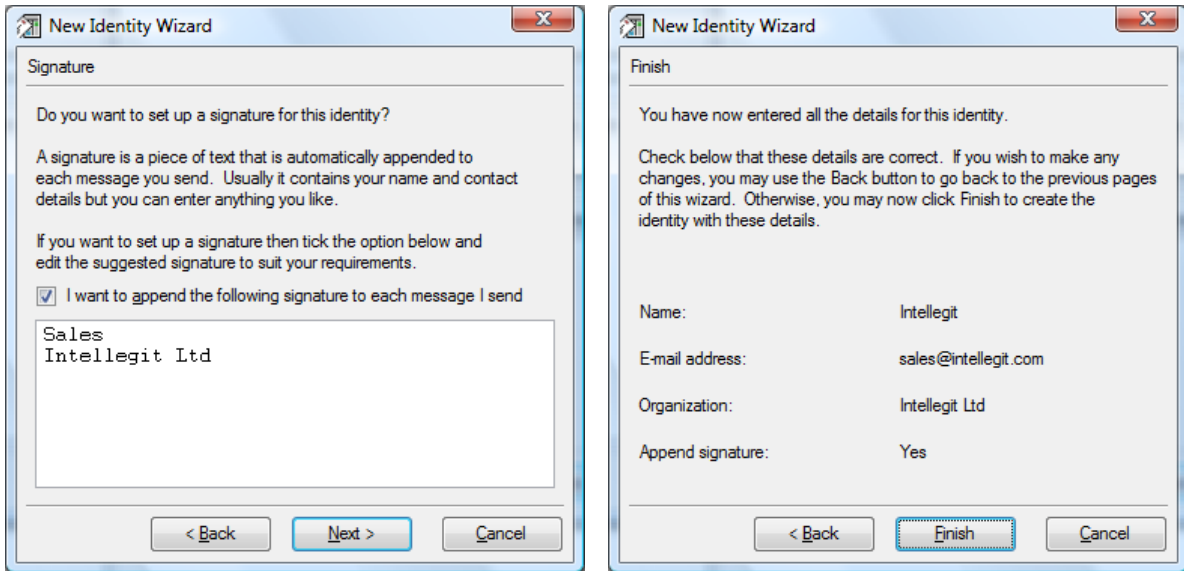
On starting *Messenger Pro* for the first time, you will be prompted for your licence information in the form of a registration ID which you will have received when you purchased *Messenger Pro*. You need to enter your ID and then click **Activate** to connect to Intellegit's activation server and validate your details. Note that this activation step must be performed each time you install a new release of *Messenger Pro*, unless you enable the **Automatically reactivate Messenger Pro for each new release** option, which will do this for you.



Creating an Identity

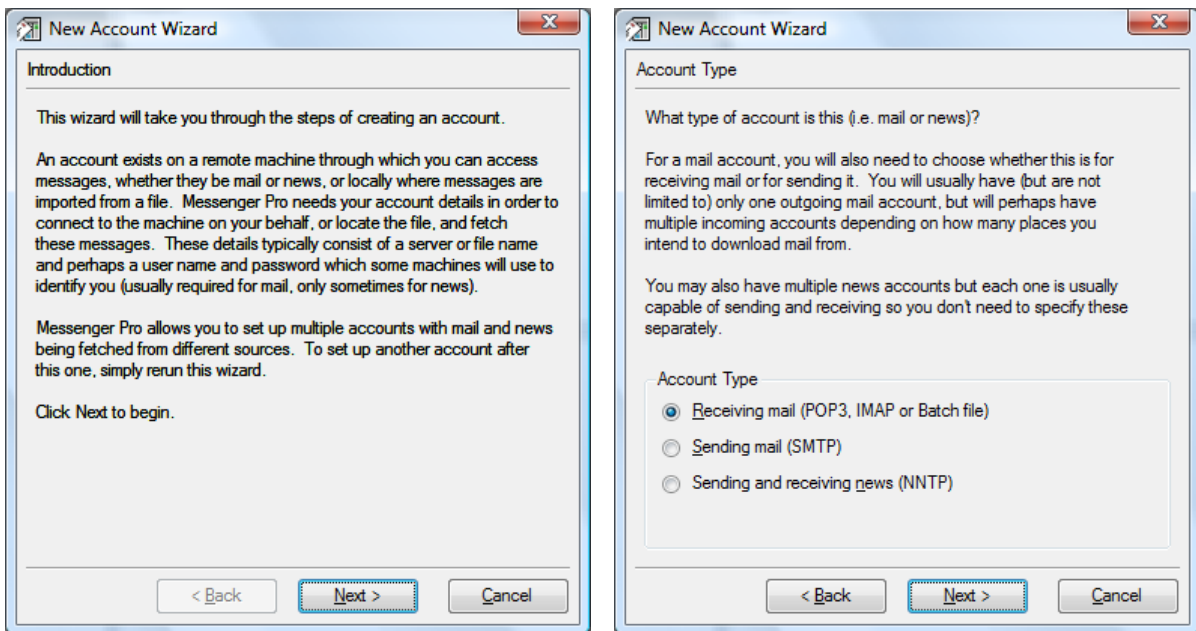
Once your licence has been successfully validated, *Messenger Pro* will prompt you to set up an identity by asking you for your name, e-mail address and organization. Detailed instructions are provided by the New Identity Wizard; you just need to follow these instructions and work through the wizard step by step by entering the desired information and clicking **Next** on each page.

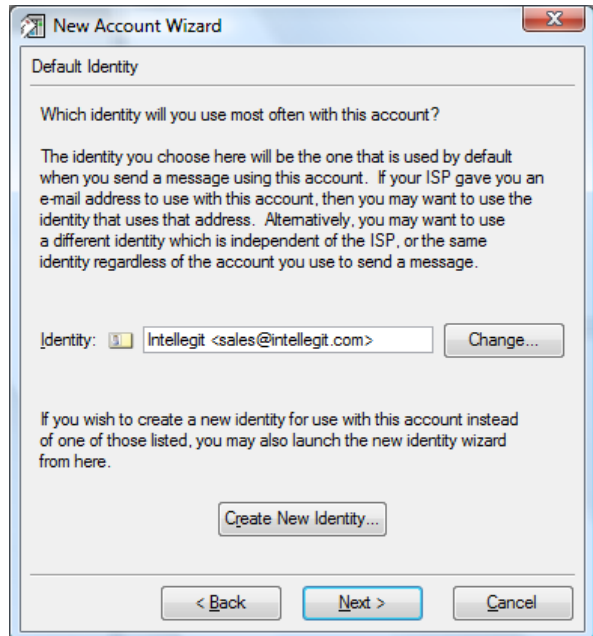
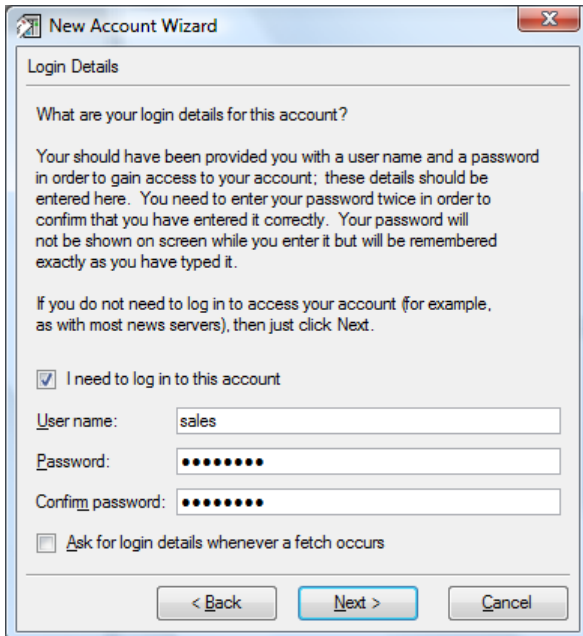
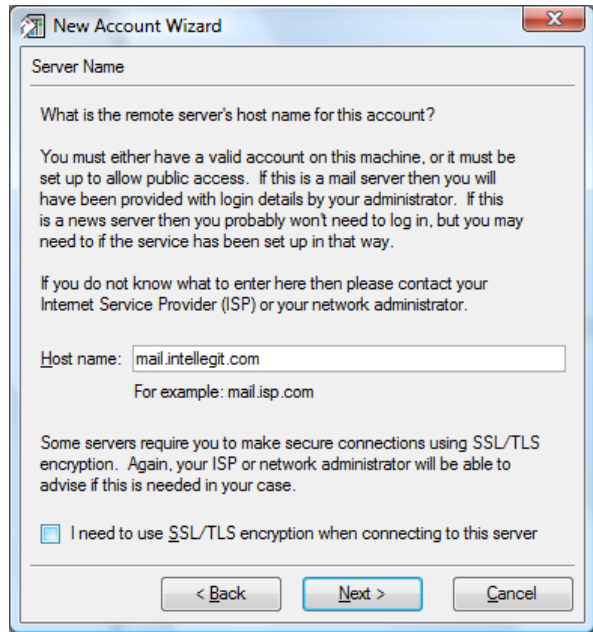
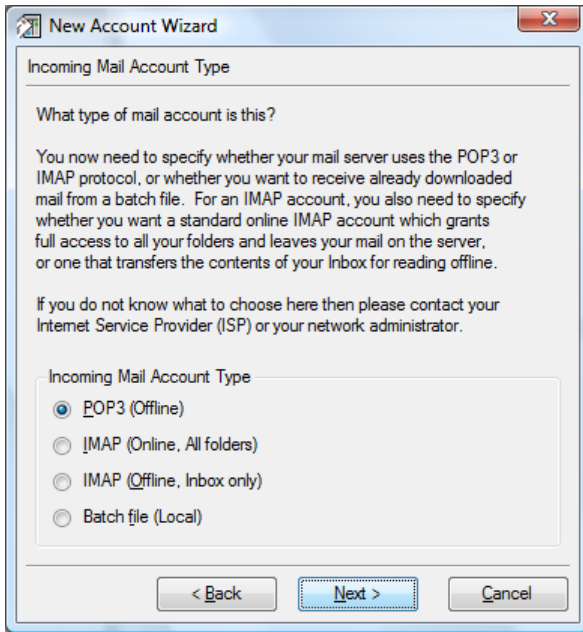


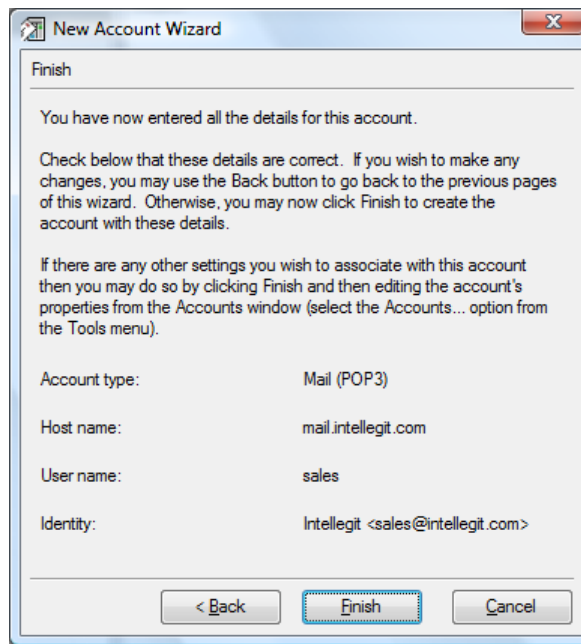


Creating an Incoming and Outgoing Mail Account

Once an identity has been created, *Messenger Pro* will ask you if you want to create an incoming mail account and then an outgoing mail account. You will need an incoming mail account if you want to receive mail from a POP3 or IMAP mailbox, and an outgoing mail account to send mail using SMTP. The New Account Wizard is used to set up both (one at a time) and detailed instructions are provided as part of the wizard.







User Manual

If at any time you need assistance when using *Messenger Pro*, its user manual can be opened from the main window by selecting **User Manual** from the **Help** menu.

Change History

2.60 (May 2009) Now correctly lists all three shortcuts created in the Start menu
 Now includes mention of the Visual C++ 2005 Redistributable
 Now mentions starting from KDE/Gnome menu

2.66 (August 2010) Changed logo